

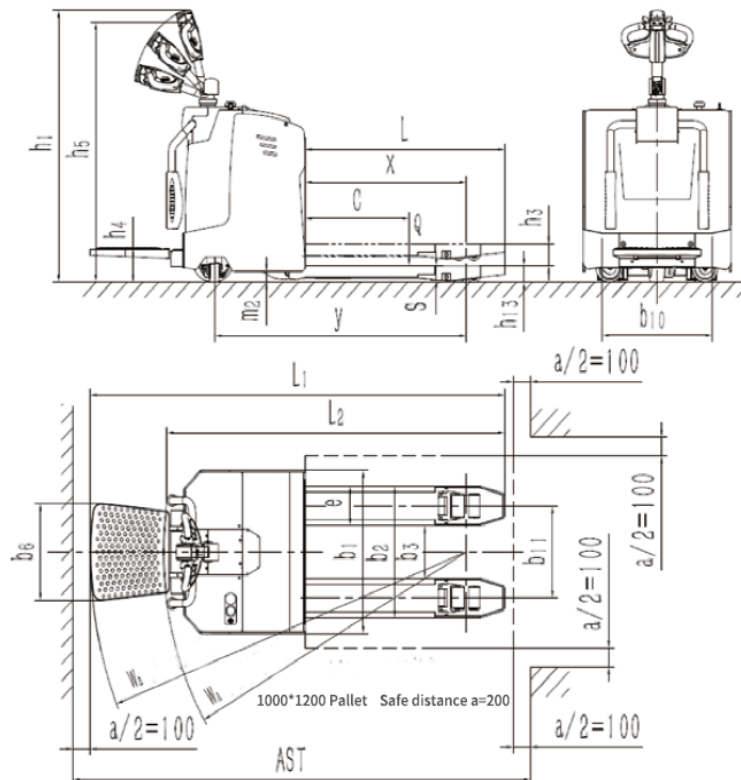


Electric Pallet Truck ME60			
Characteristics			
1.1	Manufacturer		MiMA
1.2	Model		ME60
1.3	Power type		Battery
1.4	Operation		Stand on
1.5	Load capacity	Q(kg)	6000
1.6	Load center distance	C(mm)	600
1.7	Front overhang	x(mm)	980/935
1.8	Wheelbase	y(mm)	1525/1480
Weights			
2.1	Service weight(incl. battery)	kg	1480
2.2	Axle loading, laden rear/front	kg	/
2.3	Axle loading, unladen rear/front	kg	/
Wheels			
3.1	Tyre type,front/rear		Polyurethane
3.2	Tyre size, front	mm	Φ90×80
3.3	Tyre size, rear	mm	Φ254×100
3.4	Caster wheel	mm	Φ125×50
3.5	Wheels,number front/rear (X=driven)+caster wheel		8/1X+4
3.6	Track width, rear	b10(mm)	630
3.7	Track width, front	b11(mm)	460
Dimensions			
4.1	Overall height	h1(mm)	1420
4.2	Fork lift height	h2(mm)	110
4.3	Lift height	h13+h3(mm)	205
4.4	Ground clearance,Min fork surface	h3(mm)	95
4.5	Pedal height	h4(mm)	180
4.6	Handle Height	h5(mm)	1090~ 1360
4.7	Overall length,pedal off /on	l1(mm)	1945/2390
4.8	Overall width	b1(mm)	850
4.9	Fork outside spread	b2(mm)	715
4.10	Fork dimensions	l/e/s(mm)	1200/255/87
4.11	Ground clearance, body	m2(mm)	55
4.12	Aisle width for pallet 1000*1200mm (C=500mm,pedel folded)	Ast(mm)	2250/2690
4.13	Aisle width for pallet 800*1200mm (C=600mm pedel folded)	Ast(mm)	2300/2740
4.14	Turning radius (pedal folded/unfolded)	Wa(mm)	1900/2320
Performance			
5.1	Driving speed, laden/unladen	km/h	4.0/4.5
5.2	Lifting speed, laden/unladen	mm/s	29/35
5.3	Lowering speed, laden/unladen	mm/s	29/16
5.4	Gradeability, laden/unladen (S2-5min)	%(tanθ)	4/8
5.5	Service brake		Electromagnetic
Drive			
6.1	Drive motor, rating S2=60	kw	2.5(AC)
6.2	Lift motor, rating S3=15%	kw	3.0(DC)
6.3	Battery voltage/nominal capacity	V/Ah	24/270
6.4	Battery weight	kg	240
6.5	Steering System		EPS
Others			
7.1	Battery replacement method		Hoisting

Product picture



2D view



Note: 1. The above table is the standard model data, which will be changed according to the different configuration; model upgrade and optimization will also lead to local structure and partial size changes;

2. Optional configuration and non-standard customization:

- ① The length, width, and outer distance of the fork;
- ② Warp beam truck (fork and inclined plane);
- ③, side-pull batteries, batteries of different capacities;