

MiMA

MQK30 MULTI-DIRECTIONAL COUNTERBALANCE



The MiMA MQK30 Multi-Directional Counterbalance Forklift is engineered for versatile and efficient material handling, particularly suited for long materials and operations in narrow aisles. Its advanced multi-directional capabilities and compact design ensure optimal performance in diverse environments.



Key Features:

Multi-Directional Movement: Supports straight, sideways, diagonal, and in-situ rotation for exceptional maneuverability.

48V/600Ah Lithium Battery: Provides long-lasting power with ultra-fast charging capabilities.

Maintenance-Free AC Drive System: Ensures reliable and efficient operation with minimal upkeep.

Integrated Fork Positioner and Side Shifter: Facilitates precise handling of various load sizes.

Continuous Drive System: Enables smooth directional changes without stopping, ensuring efficient operation and reducing handling time in demanding environments.


Wireless Video Assist: Offers enhanced visibility for precise load handling.

Advanced Laser Guidance System: Assists in accurate positioning and movement within confined spaces.



 5 Year Battery Warranty

 2 Year Warranty

 30 Days Money Back Guarantee

 Service Contracts Available

SAFETY

Equipped with a high-strength mast and load-sensing hydraulic system, the MQK30 ensures smooth, precise lifting and movement control. The wireless video assist and advanced laser guidance system enhance operator awareness, reducing the risk of accidents.

- **Warranty:** Truck – 2 year / Battery – 5 years.
- **Eco-Friendly Operation:** Zero emissions for a cleaner and quieter work environment.
- **Cost Efficiency:** Substantial savings on operational costs compared to traditional material handling equipment.
- **Durability and Reliability:** Built to withstand demanding warehouse applications with minimal maintenance.
- **Enhanced Precision:** Ideal for tight spaces and high-density storage solutions, ensuring optimal material handling efficiency.

Innovation

The MQK30 combines the advantages of counterbalance forklifts and side loader trucks, featuring a three-point design with dual front-wheel drive and independent control of all three wheels. This configuration allows for continuous driving modes without stopping, including straight, sideways, diagonal traveling, right-angle turning, and in-situ rotation, providing high flexibility.



EFFICIENCY

The multi-directional capabilities of the MQK30 enable efficient handling of materials up to 15 meters long in tight spaces, including narrow aisles and outdoor bulk yards. Its compact design, with a 1.54-meter width and 2.25-meter overhead guard height, allows for efficient navigation in low-clearance environments, maximizing storage potential.

MAINTENANCE

The MQK30 features a maintenance-free AC system and dual-drive braking, enhancing energy efficiency and safety. The lithium battery supports ultra-fast charging, ensuring extended operation and minimal downtime.

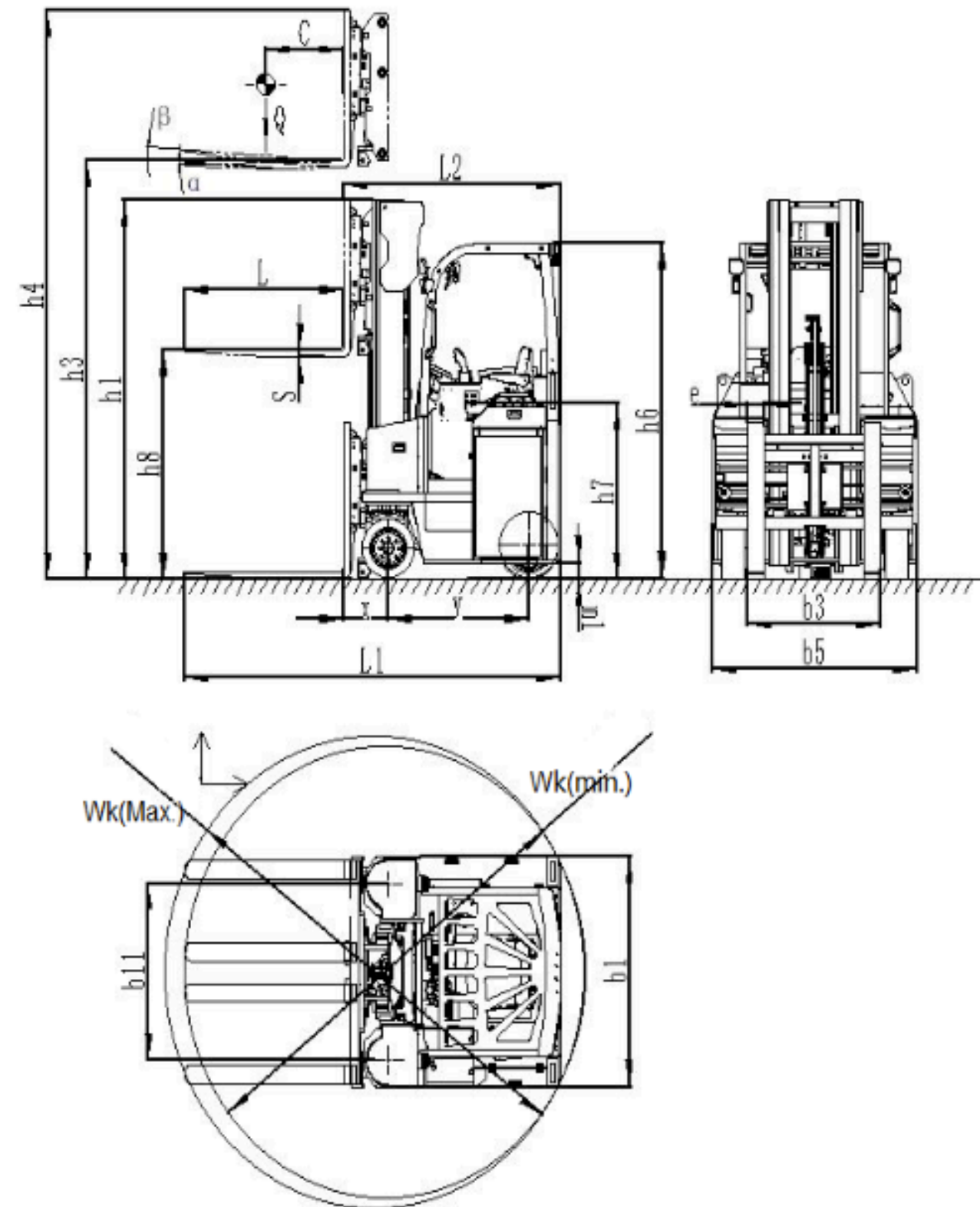
Specification

Characteristics	1.1	Manufacturer		MIMA
	1.2	Vehicle Model Code		1MQK30
	1.3	Power type		Battery
	1.4	Operation		Seated
	1.5	Load capacity	Q(kg)	3000
	1.6	Load center distance	C(mm)	500
	1.7	Front overhang	x(mm)	346
	1.8	Wheelbase	y(mm)	1055
Weight	2.1	Service Weight(incl. battery)	kg	Refer to the mast specification
Wheel	3.1	Tyre type		Solid rubber Tyre
	3.2	Tyre size, front		16×7×10.5/406×178×266.7
	3.3	Tyre size, rear		18×9×12.125/457×229×308
	3.3	Wheels,number front/rear (X=driven)		2X/1
	3.4	Track width, front	b10(mm)	1180
Dimension	4.1	Mast tilt angle front/rear (standard)	$\alpha/\beta(^{\circ})$	1/3.5
	4.2	Mast retracted height	h1(mm)	Refer to the mast specification
	4.3	Free Lift height (standard)	h2(mm)	Refer to the mast specification
	4.4	Lift height	h3(mm)	Refer to the mast specification
	4.5	Mast extended height	h4(mm)	Refer to the mast specification
	4.6	Overhead guard height	h6(mm)	2250
	4.7	Seat SIP point ground clearance	h7(mm)	1230
	4.8	Overall length	l1(mm)	2560
	4.9	Length to fork face	l2(mm)	1640
	4.10	Overall width	b1(mm)	1540
	4.11	Fork dimensions	l/e/s(mm)	920/125/45
	4.12	Fork carriage width	b3(mm)	1540
	4.13	Fork outside spread (min~max)	b5(mm)	400~1400
	4.14	Ground clearance (laden, center of mast)	m1(mm)	80
	4.15	Aisle Width	mm	Refer to the aisle specification
	4.16	Mini. stacking asile width with pallet 1000×1200mm	mm	3140
	4.17	Mini. stacking asile width with 800×1200mm(load	mm	2940
	4.18	Unladen in-situ rotation diameter(Mini/Max.Fork outside sp	Wk(mm)	3200/3050
Performance	5.1	Side Travel Speed, laden/unladen	km/h	7~8
	5.2	Straight Travel Speed, laden/unladen	km/h	9~10
	5.3	Lifting Speed, laden/unladen	mm/s	230/350
	5.4	Lowering Speed, laden/unladen	mm/s	300/260
	5.5	Max straight gradeability, laden/unladen (S2-5min)	%($\tan\theta$)	10/10
	5.6	Max sideways gradeability, laden/unladen (S2-5min)	%($\tan\theta$)	8/8
	5.7	Service brake		Electromagnetic
Drive	6.1	Drive motor, rating S2=60	kw	AC7*2
	6.2	Lift motor, rating S3=15%	kw	AC14
	6.3	Lead-acid battery voltage/nominal capacity (standard)	V/Ah	48/900
	6.4	Lead-acid battery weight	kg	1478
	6.5	Lithium battery voltage/ nominal capacity (optional)	V/Ah	48/600
	6.6	Lithium battery weight	kg	934

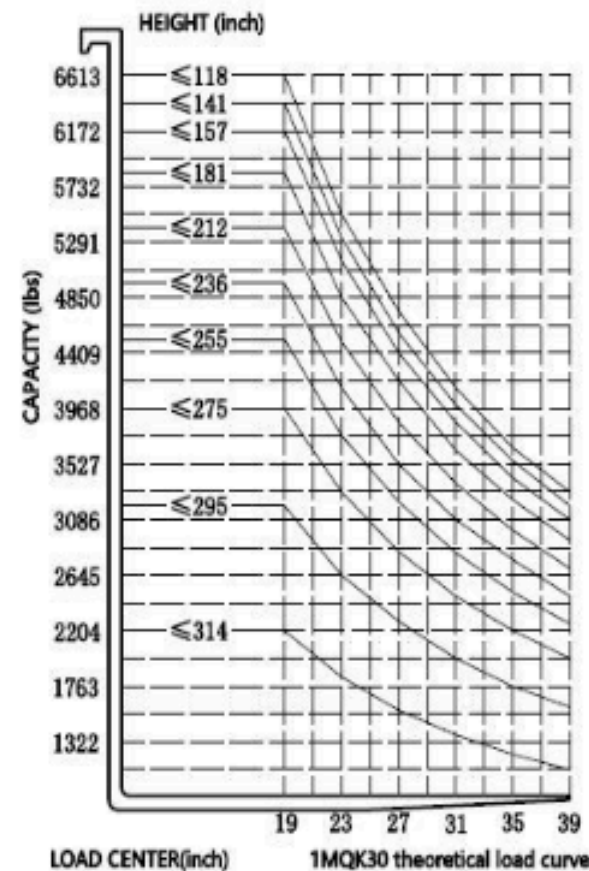
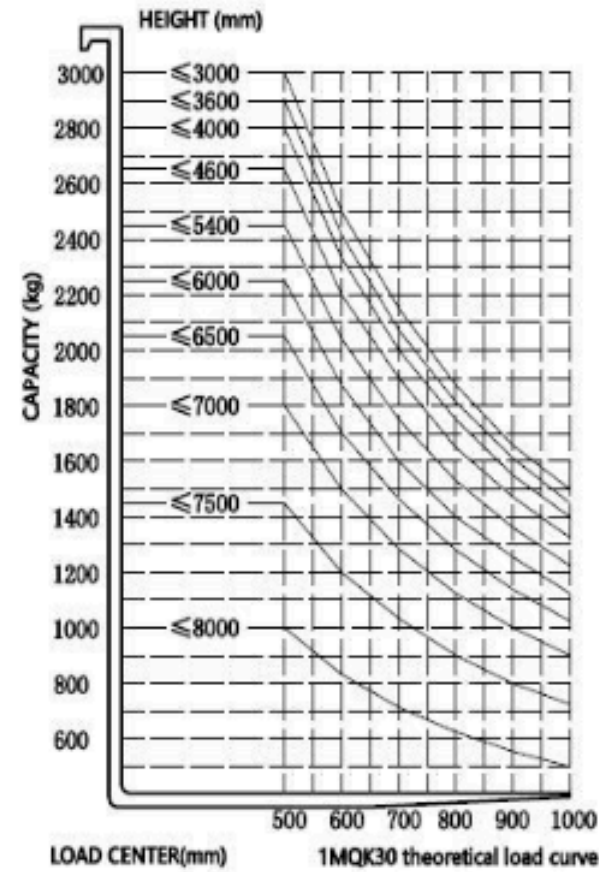
1. Standard configuration includes adjustable forks with side shift, side shift range ± 100 mm;

2. The data for the standard models in the series may vary depending on the configuration.

2D view



Load chart 1MQK30



Mast parameter&self-weight 1MQK30

Mast type	Mast model	Lifting height	Mast retracted height	Mast extended height	Free lifting height	Service Weight(incl. battery)	Mast tilt angle
		mm			kg		(°)
	Model > 1MQK30						
Triplex full free mast	80T	8000	3503	9360	2451	7120	1/3.5
	75T	7500	3337	8860	2287	7060	1/3.5
	70T	7000	3169	8360	2119	7000	1/3.5
	65T	6500	2902	7860	1852	6930	1/3.5
	60T	6000	2735	7360	1686	6870	1/3.5
	54T	5400	2535	6760	1486	6810	1/3.5
	46T	4600	2268	5960	1270	6750	1/3.5

Note: Self-weight is for reference only(The forklift weight without mast is 5300kg).

Load parameter 1MQK30

Mast type	Mast model	Lifting height mm	Load capacity										
			kg										
		C(mm) > @	500	550	600	650	700	750	800	850	900	950	1000
Triplex full free mast	80T	8000	1000	910	830	770	710	660	625	580	555	520	500
	75T	7500	1450	1315	1205	1115	1035	965	905	850	805	760	725
	70T	7000	1800	1635	1500	1380	1285	1200	1125	1055	1000	945	900
	65T	6500	2050	1860	1705	1575	1460	1365	1280	1205	1135	1075	1025
	60T	6000	2250	2045	1875	1730	1605	1500	1405	1320	1250	1180	1125
	54T	5400	2450	2225	2040	1880	1750	1630	1530	1440	1360	1290	1225
46T	4600	2650	2410	2205	2035	1890	1765	1655	1555	1470	1395	1325	

Note: 1. The comprehensive load capacity of other attachments needs to be calculated;

Minimum stacking aisle width parameter

1MQK30									
	mm	Pallet along fork dimensions (L)							
		800	900	1000	1100	1200	1300	1400	1500
Pallet cross fork dimensions (W)	5000	2940	3040	3140	3240	3340	3440	3540	3640
	6000	3040	3140	3240	3340	3440	3540	3640	3740
	7000	3140	3240	3340	3440	3540	3640	3740	3840
	8000	3240	3340	3440	3540	3640	3740	3840	3940

Note:

- The data indicates the minimum stacking aisle width, which is the net aisle between two shelves; when the goods extend out of the shelf, the aisle distance needs to be increased accordingly. It is recommended that plus 2 times the actual size of the goods extending out of the shelf or more.
- Efficiency aisle width requires to plus 100mm or more.